

ISOPEDOTIS (SERIES A)

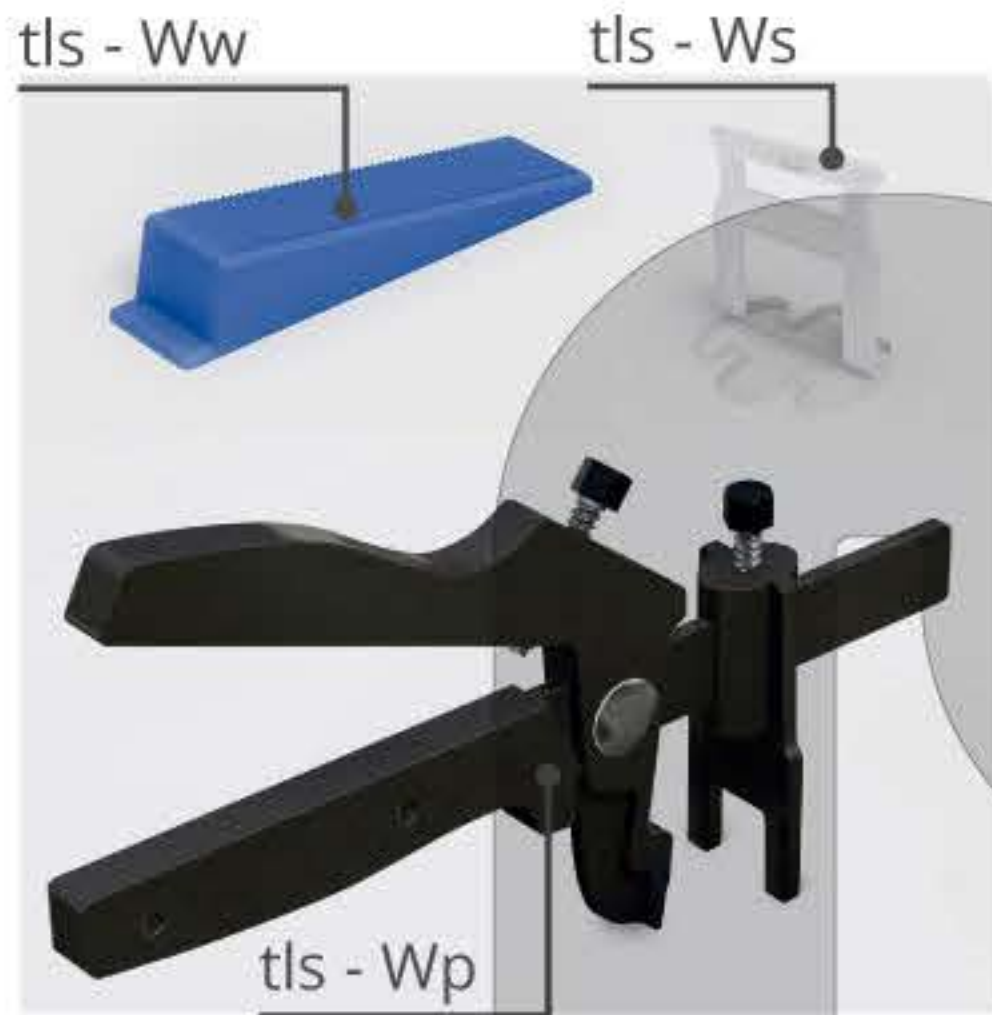
Leveling System

KALLOS ISOPEDOTIS

What is Isopedotis Wedge?

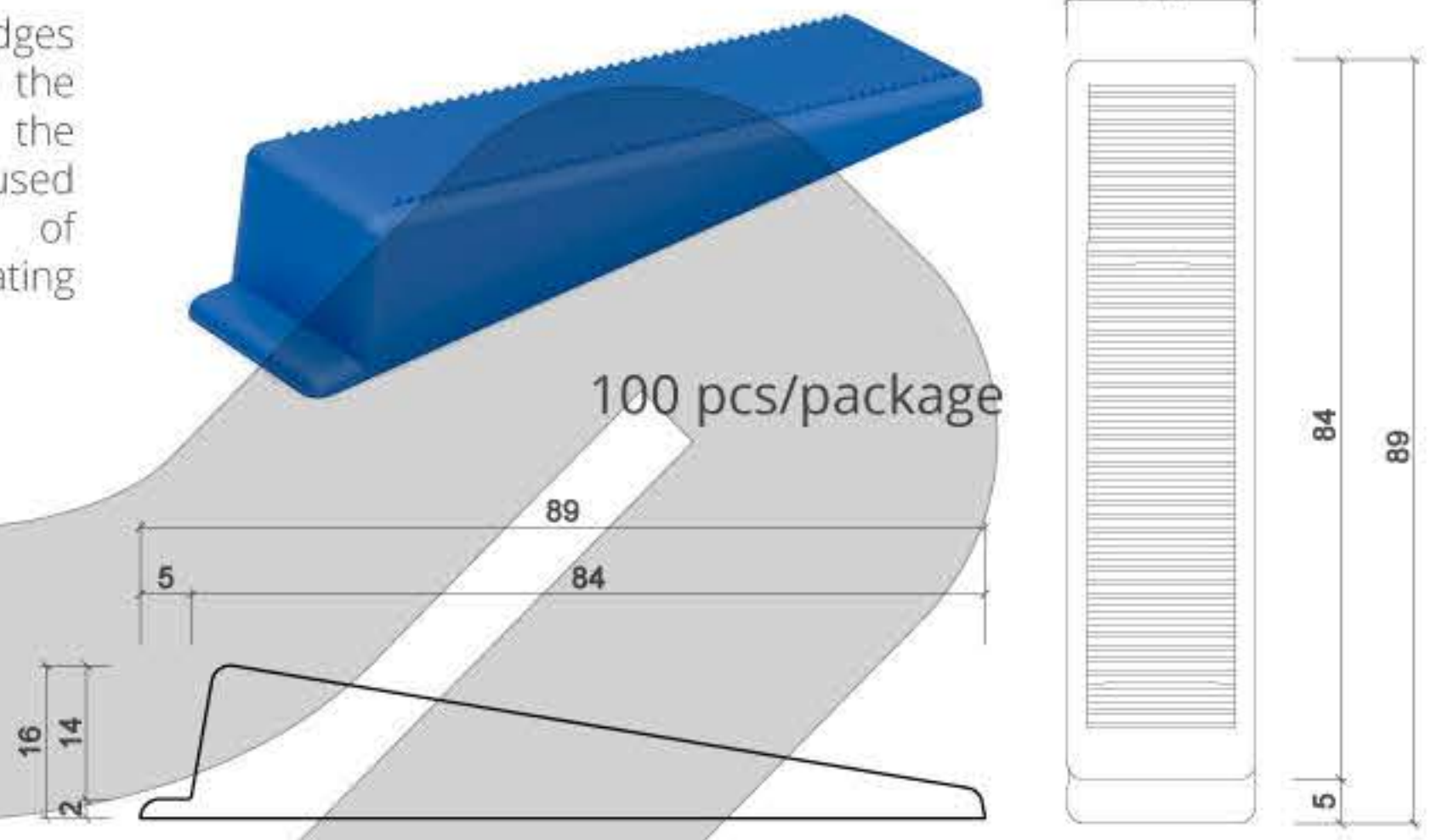
It is a tile leveling system, used in the installation of artificial and natural tiles and ensures that the material is paved more easily, faster and more evenly. It includes system leveling wedge tls-Ww, holder join tls-Ws and pliers tls-Wp.

Elements

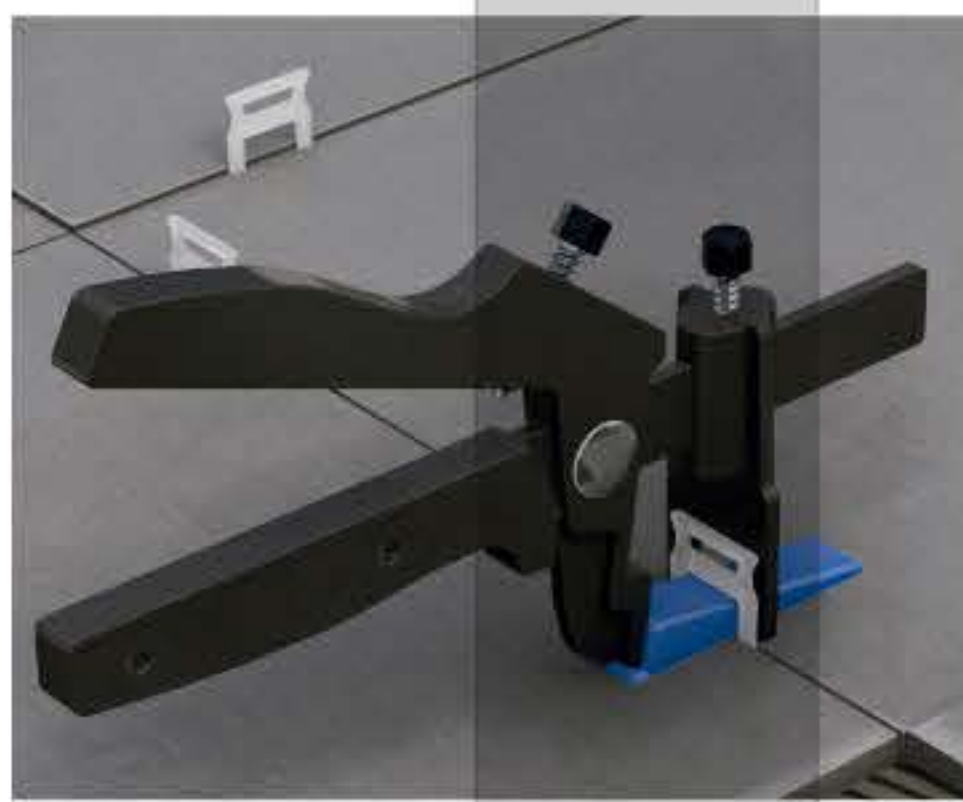


tls-Ww

These are the wedges that are placed to the empty holes of the holder joints and used in the process of leveling of the coating materials.



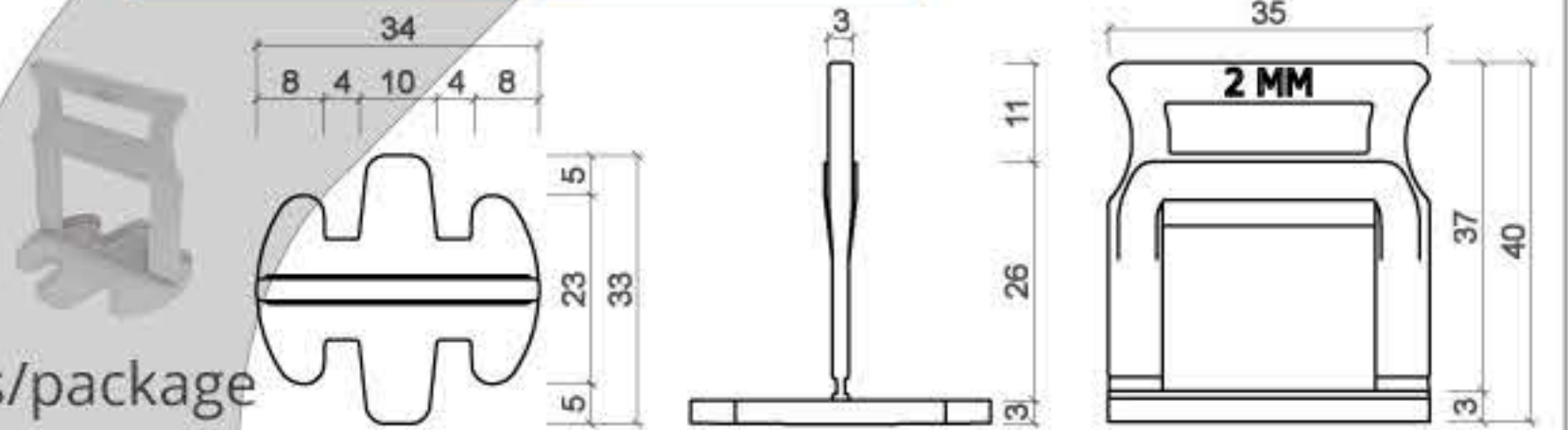
Placement and Operation



tls-Ws

Holder joint that can be used in joints with a thickness of 1 mm, 2 mm, and 3 mm. It is fit for 5-13 mm thick coating materials.

200 pcs/package



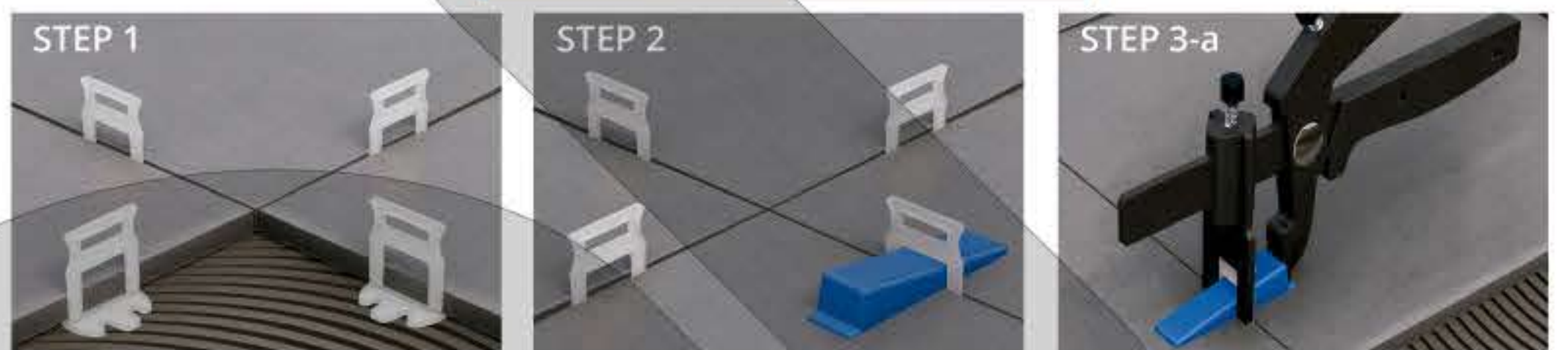
tls-Wp

This is the pliers that is used in the process of fixing the holder joint and the coating material together with the wedge.

1 pcs



Mode of Use



After the coating material is placed on the adhesive, the holder joint should be placed so that it is against the coating material and its sole touches to the adhesive.

After placing coating material to the empty part of the holder joint, wedges should be placed to the empty holes of the holder joint.

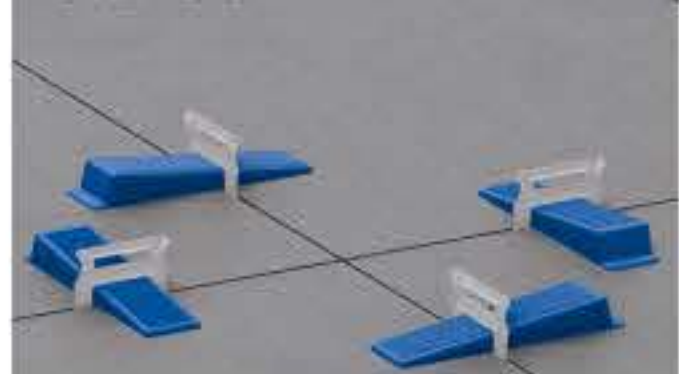
With the aid of the installation pliers, wedges should be fastened in a way that it does not exceed the breaking points of the wedges and coating materials should be brought to the same level horizontally.

X	X cm										tile	Y cm
25	53	40	32									
30	67	50	40	44								
33	61	45	36	40	37							
45	44	33	27	30	27	20						
50	40	30	24	27	24	18	16					
60	33	25	20	22	20	15	13	11				
75	33	25	20	21	19	14	12	10	9			
90	30	22	18	19	17	12	11	9	8	7		
100	33	25	20	20	18	13	12	10	9	8	8	
120	28	21	17	17	15	11	10	8	7	6	7	
150	27	20	16	14	15	11	10	8	8	6	6	
300	37	25	19	15	13	13	9	8	7	5	5	
cm	15	20	25	30	33	45	50	60	75	90	100	Y

STEP 4

After fixing, wait until the adhesive is dry (24 hours). Then the part that remains on the surface of the coating material should be removed by hitting to the sides of the wedge with a mallet with plastic end.

STEP 3-b



If the width between the coating materials is bigger than 3 mm, tile spacer can be used depending on the width.



STEP 5



After dismantling, the wedges should be collected to be used in later installations. Collected wedges can be re-used 20 to 40 times depending on how the personnel work.