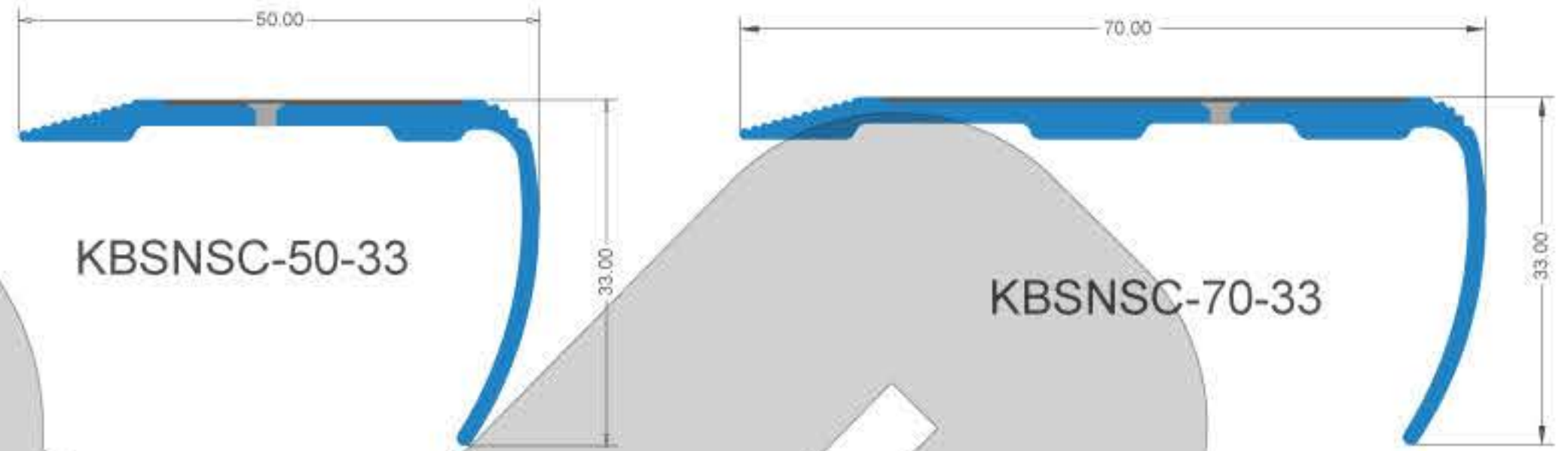
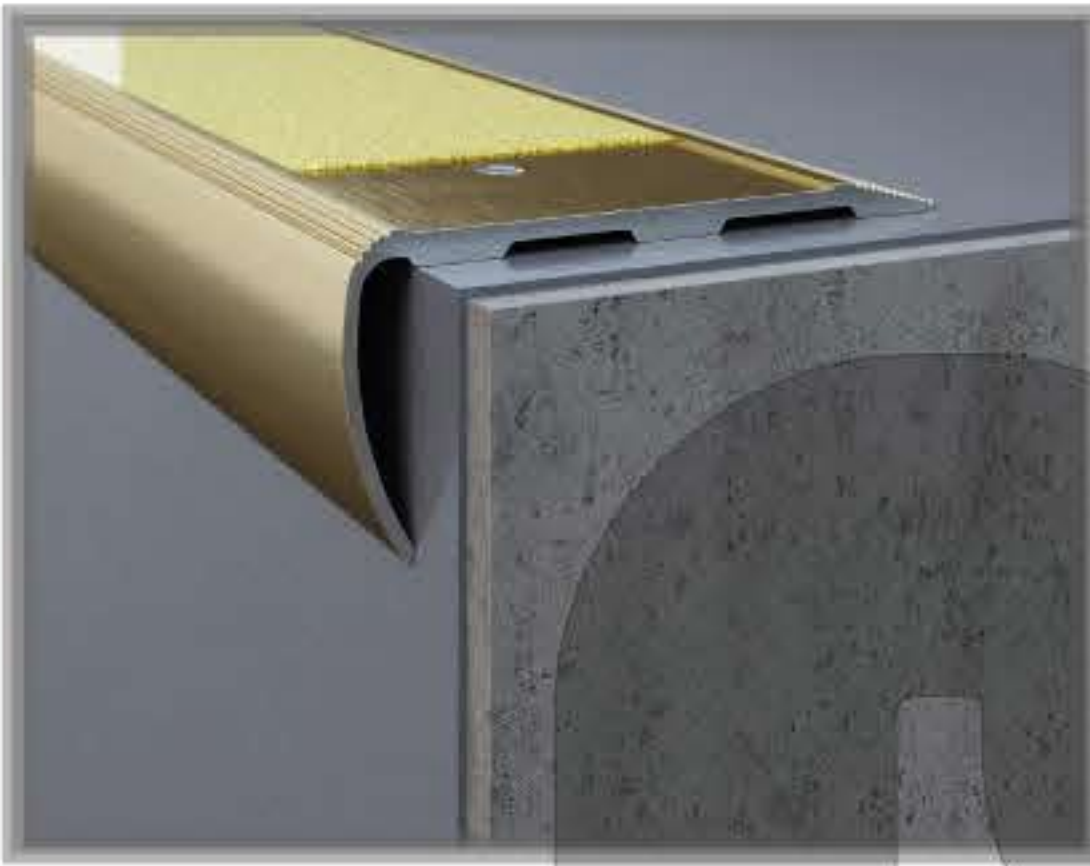


# PROGRADINO ( SERIES B )

Anodized Aluminum

**KALLOS PROGRADINO (KBSN)** is a contemporary design ALUMINUM Step edge profile with a unique serrated grip edge. Providing edge protection to the floor covering and highlighting the step edge.

**KALLOS Aluminum Profiles** are supplied with protection film for added protection, before, during and after application - as standard.



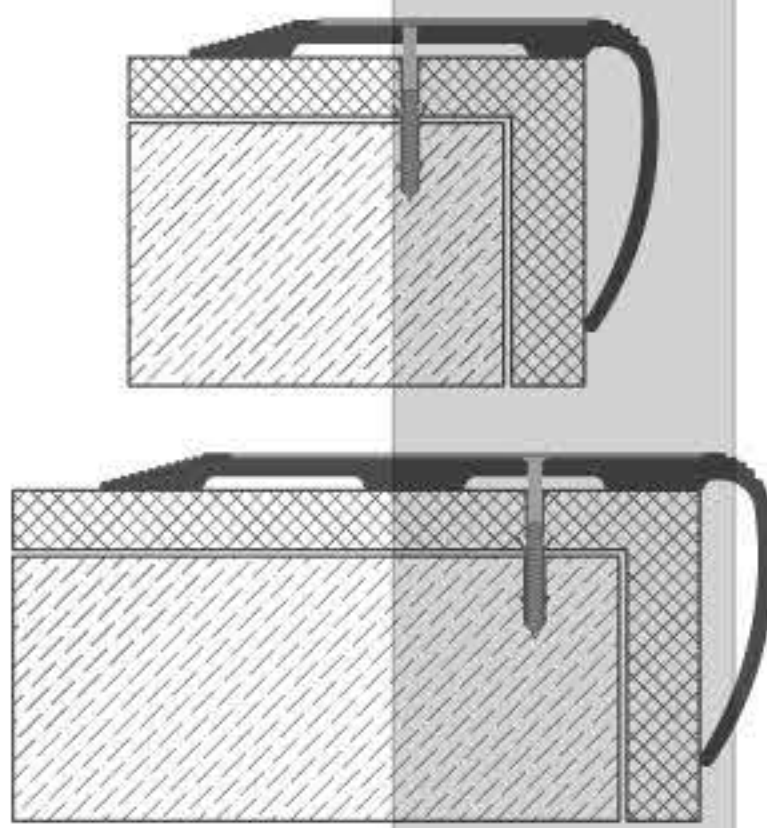
## Profile Data

Chemical composition: In accordance with BS EN 573-3:2003 Aluminium and aluminium alloys. The trace elements of the composition which determine the alloy selected are 6063.

ARTICLE	W( mm )	H ( mm )	L ( mm )
KBSNSC-50-33-XX-RR	50	33	3.30
KBSNSC-70-33-XX-RR	70	33	3.30

» For KBSNSC-70-33-XX-RR the XX stand as the profiles anodizing color and the RR stand for Carborundum color.

## Laying instructions



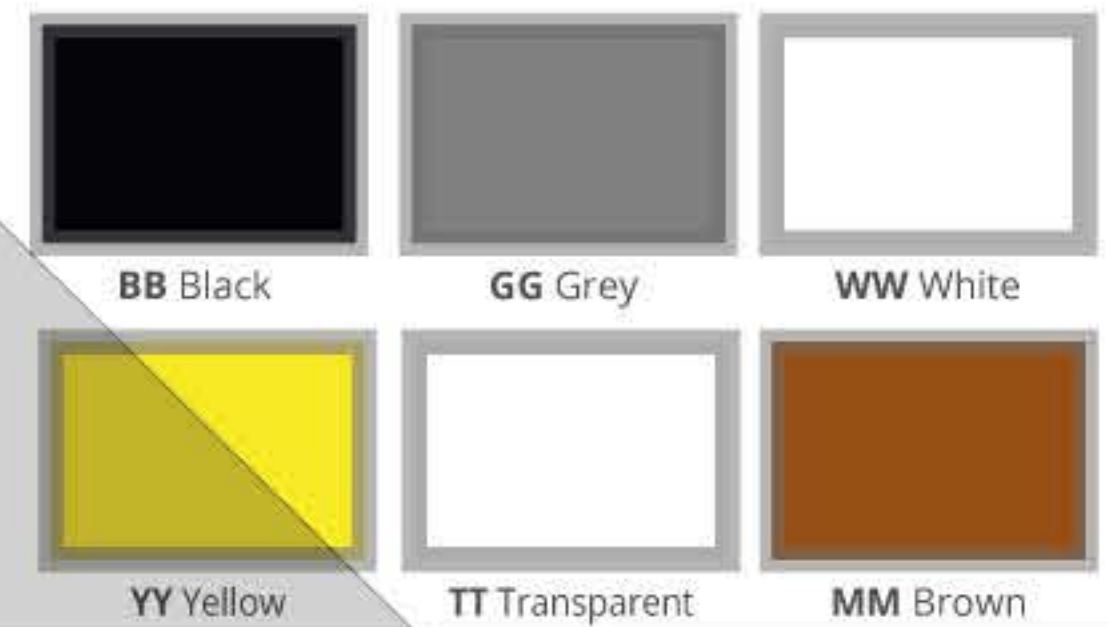
- 1 Ensure the steps are dry, clean, free of debris, level and even.
- 2 If Predrilled use the drill holes to mark steps for drilling location.
- 3 Drill and Plug the steps.
- 4 Apply suitable adhesive to the underside of the nosing and apply nosing to the step.
- 5 Screw down the step with the appropriate size screws.
- 6 Apply insert (if separate) or insert pip to cover the screw head.

## Colors

### Aluminum



### Adhesive Carboradum - Non Slip



## Technical Data

Aluminium AA 6063T6 / UNS A96063  
Anodished to DIN 17611

Si %	0.2 - 0.6
Fe %	0.35
Cu %	0.1
Mn %	0.1
Mg %	0.45 - 0.9
Zn %	0.1
Ti %	0.1
Cr %	0.1
Al	Balance

## General Cleaning and Maintenance

» Inserts:  
All inserts should be cleaned using a neutral detergent and thoroughly rinsed with clean water. Ensure all inserts are dry prior to receiving foot traffic.

» Aluminium Channel:  
These can be polished using steel wool or cloth to maintain the appearance - under no circumstances should solvent cleaners be utilised in cleaning or maintaining Aluminium Products.

\* Size can be customized, Production upon request, timing and price to be agreed