

# SPEDONA Tactile System



## KALLOS Spedona System

The Spedona system, a real manual of the building, plays a key role in accessibility. The objective of Spedona Signage System is not to create an additional system alongside the systems in place, but to seek convergences.

### KODOINOX



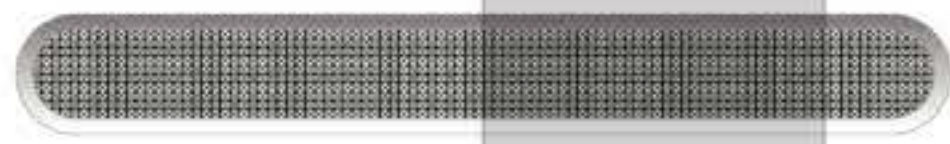
**kodo barre in**  
w 280 x h 35 x d 5 mm  
w 11,02 x h 1,38 x d 0,19"



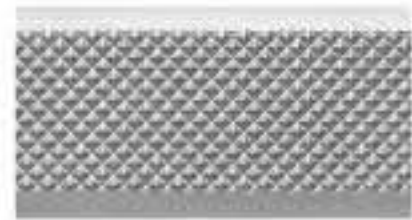
Brushed stainless steel  
AISI 316L



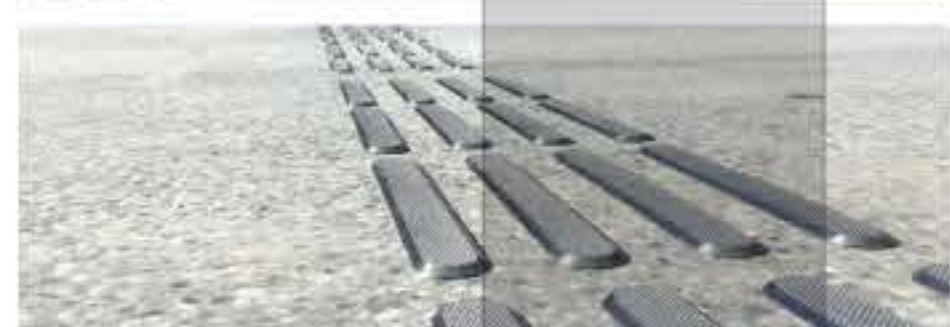
Brushed brass



**kodo barre out**  
w 280 x h 35 x d 5 mm  
w 11,02 x h 1,38 x d 0,19"



Brushed stainless steel  
with relief  
AISI 316L



### KODOINOX DETAILS



**kodo button in**  
w 35 x h 35 x d 5 mm  
w 1,38 x h 1,38 x d 0,19"

### KODOINOX DETAILS



**kodo button out**  
w 35 x h 35 x d 5 mm  
w 1,38 x h 1,38 x d 0,19"

#### Indoor



Brushed stainless  
steel  
AISI 316L

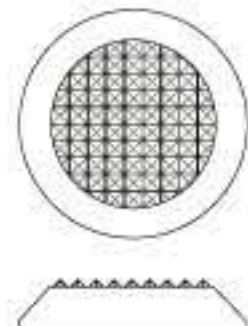


Brushed brass

#### Outdoor



Brushed stainless steel with  
relief  
AISI 316L



**kodo button ABS**  
w 35 x h 35 x d 5 mm  
w 1,38 x h 1,38 x d 0,19"

#### Injection molding, | ABS



+/- RAL  
1006



+/- RAL  
7004



+/- RAL  
3011



+/- RAL  
9004

### KODOTONE



Brushed stainless  
steel AISI 316L +  
DIAMOND TRED



+/- RAL  
9004



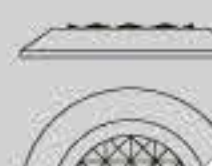
+/- RAL  
7004



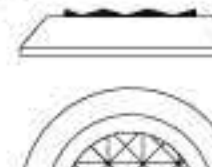
+/- RAL  
1006



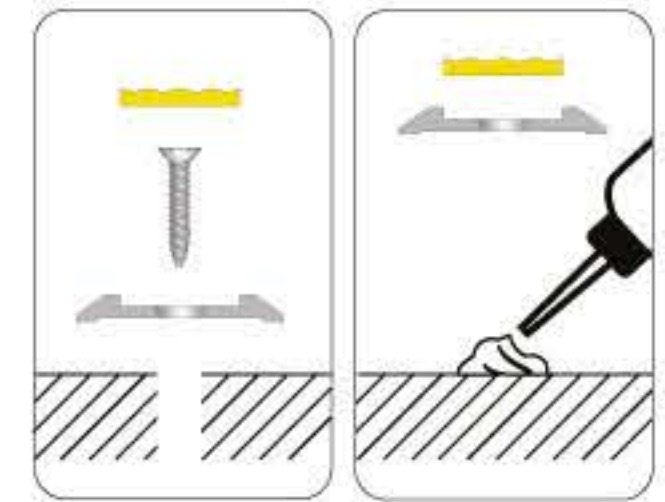
+/- RAL  
3011



**kodotone button out 35**  
w 35 x h 35 x d 4,5 mm  
w 11,02 x h 1,38 x d 0,18"



**kodotone button out 25**  
w 25 x h 25 x d 4,5 mm  
w 10,83 x h 0,98 x d 0,18"



Screw not included



Brushed stainless  
steel AISI 316L

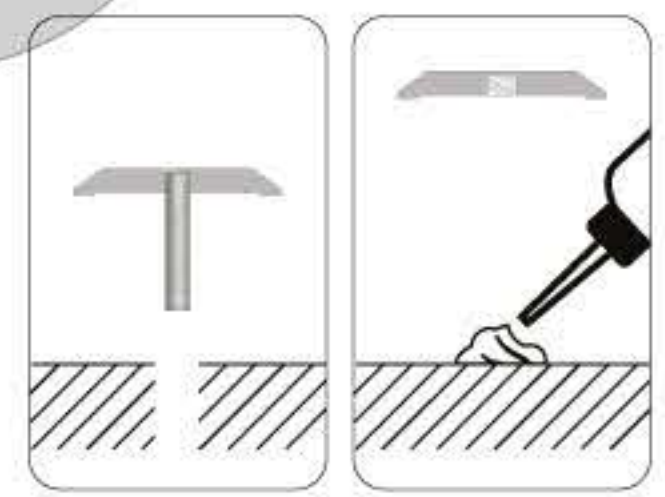
### KODOTONE



**kodotone button in 35**  
w 35 x h 35 x d 4,5 mm  
w 11,02 x h 1,38 x d 0,18"



**kodotone button in 25**  
w 25 x h 25 x d 4,5 mm  
w 10,83 x h 0,98 x d 0,18"



Screw M5 option on request  
h 16mm / 30mm