

# PRO WORSTRIP

PVD COLORED - Polished and Brushed finish  
( stainless steel AISI 304 and 316 )

**KALLOS PRO WORSTIP ( KPWSPA )** is Stainless Steel strip which is C design to enhance the installation of ceramic tiles and also to create separation in between the same or different types of finishes. These profiles offer superb resistance to principal chemical and atmospheric agents and are particularly recommended to protect steps in zones such as food processing industries, breweries, dairies, hospitals and external applications. Its smooth and non-porous surface makes it especially difficult for the adhesion and survival of bacteria and/or other microorganisms.

**KALLOS Stainless Steel profiles** Supplied with protection film for added protection, before, during and after application - as standard.



KPWSPA-H

## General Cleaning and Maintenance

- » Do not use steel wool or sandpaper, or mineral acids, bleaches or chlorine cleansers.
- » Do not add chlorine to your pool right next to your stainless steel. Add it as far away as possible.
- » Do not store stainless steel in a closed area underneath steel beams to avoid corrosive condensation from dripping onto the equipment and leaving brown spots.
- » Do not store stainless steel where it will attract and retain moisture or airborne contaminants and do not store equipment in the same areas as chlorine.

» Rinse off stainless steel when exposed to Chlorine frequently with fresh water to wash away accumulated chemicals such as chlorine and wipe dry with a clean cloth. Especially try to clean immediately after use around chlorides (chlorine powder, seawater, etc.)

» Clean frequently with a cleaner and water. Any cleaner that is safe for glass is usually safe for stainless steel.

Inspect frequently, if you notice discoloration, tarnish or water stains, increase the frequency of your fresh water rinses to reduce accumulated chemicals.

» Remove any rust spots as soon as possible to prevent irreversible pitting.

» Occasionally clean with borax, soda ash, or a non-abrasive commercial cleanser and water.

» Stubborn Stains may be removed with a magnesium oxide, ammonia and water paste.

## Polished and Brushed PVD Finish Stainless steel

AISI 304 with protection film - bar length 2.44 meter ( H from 10 to 30 ) \*

ARTICLE	H ( mm )	L ( m )
KPWSPA4-BG-10	10	2.44
KPWSPA4-BG-15	15	2.44
KPWSPA4-BG-25	25	2.44
KPWSPA4-BG-30	30	2.44
KPWSPA4-BR-10	10	2.44
KPWSPA4-BR-15	15	2.44
KPWSPA4-BR-25	25	2.44
KPWSPA4-BR-30	30	2.44
KPWSPA4-BB-10	10	2.44
KPWSPA4-BB-15	15	2.44
KPWSPA4-BB-25	25	2.44
KPWSPA4-BB-30	30	2.44
KPWSPA4-7P-10	10	2.44
KPWSPA4-7P-15	15	2.44
KPWSPA4-7P-25	25	2.44
KPWSPA4-7P-30	30	2.44
KPWSPA4-8P-10	10	2.44
KPWSPA4-8P-15	15	2.44
KPWSPA4-8P-25	25	2.44
KPWSPA4-8P-30	30	2.44
KPWSPA4-15P-10	10	2.44
KPWSPA4-15P-15	15	2.44
KPWSPA4-15P-25	25	2.44
KPWSPA4-15P-30	30	2.44
KPWSPA4-18PZ-10	10	2.44
KPWSPA4-18PZ-15	15	2.44
KPWSPA4-18PZ-25	25	2.44
KPWSPA4-18PZ-30	30	2.44
KPWSPA4-19CO-10	10	2.44
KPWSPA4-19CO-15	15	2.44
KPWSPA4-19CO-25	25	2.44
KPWSPA4-19CO-30	30	2.44
KPWSPA4-6B-10	10	2.44
KPWSPA4-6B-15	15	2.44
KPWSPA4-6B-25	25	2.44
KPWSPA4-6B-30	30	2.44
KPWSPA4-PG-10	10	2.44
KPWSPA4-PG-15	15	2.44
KPWSPA4-PG-25	25	2.44
KPWSPA4-PG-30	30	2.44
KPWSPA4-PR-10	10	2.44
KPWSPA4-PR-15	15	2.44
KPWSPA4-PR-25	25	2.44
KPWSPA4-PR-30	30	2.44
KPWSPA4-PB-10	10	2.44
KPWSPA4-PB-15	15	2.44
KPWSPA4-PB-25	25	2.44
KPWSPA4-PB-30	30	2.44

## Polished and Brushed PVD Finish Stainless steel

AISI 316 with protection film - bar length 2.44 meter ( H from 10 to 30 ) \*

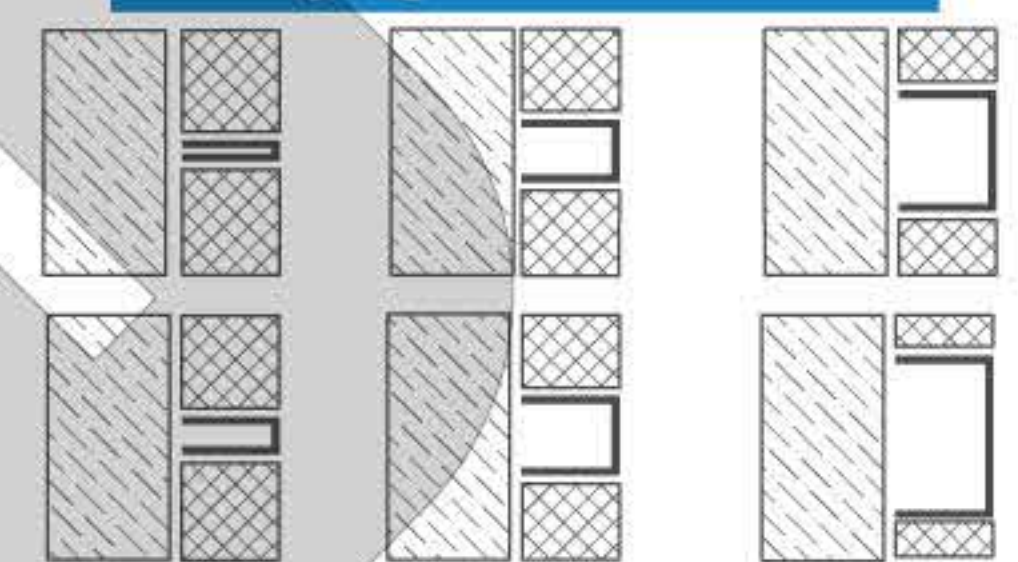
ARTICLE	H ( mm )	L ( m )
KPWSPA6-BG-10	10	2.44
KPWSPA6-BG-15	15	2.44
KPWSPA6-BG-25	25	2.44
KPWSPA6-BG-30	30	2.44
KPWSPA6-BR-10	10	2.44
KPWSPA6-BR-15	15	2.44
KPWSPA6-BR-25	25	2.44
KPWSPA6-BR-30	30	2.44
KPWSPA6-BB-10	10	2.44
KPWSPA6-BB-15	15	2.44
KPWSPA6-BB-25	25	2.44
KPWSPA6-BB-30	30	2.44
KPWSPA6-7P-10	10	2.44
KPWSPA6-7P-15	15	2.44
KPWSPA6-7P-25	25	2.44
KPWSPA6-7P-30	30	2.44
KPWSPA6-8P-10	10	2.44
KPWSPA6-8P-15	15	2.44
KPWSPA6-8P-25	25	2.44
KPWSPA6-8P-30	30	2.44
KPWSPA6-15P-10	10	2.44
KPWSPA6-15P-15	15	2.44
KPWSPA6-15P-25	25	2.44
KPWSPA6-15P-30	30	2.44
KPWSPA6-18PZ-10	10	2.44
KPWSPA6-18PZ-15	15	2.44
KPWSPA6-18PZ-25	25	2.44
KPWSPA6-18PZ-30	30	2.44
KPWSPA6-19CO-10	10	2.44
KPWSPA6-19CO-15	15	2.44
KPWSPA6-19CO-25	25	2.44
KPWSPA6-19CO-30	30	2.44
KPWSPA6-6B-10	10	2.44
KPWSPA6-6B-15	15	2.44
KPWSPA6-6B-25	25	2.44
KPWSPA6-6B-30	30	2.44
KPWSPA6-PG-10	10	2.44
KPWSPA6-PG-15	15	2.44
KPWSPA6-PG-25	25	2.44
KPWSPA6-PG-30	30	2.44
KPWSPA6-PR-10	10	2.44
KPWSPA6-PR-15	15	2.44
KPWSPA6-PR-25	25	2.44
KPWSPA6-PR-30	30	2.44
KPWSPA6-PB-10	10	2.44
KPWSPA6-PB-15	15	2.44
KPWSPA6-PB-25	25	2.44
KPWSPA6-PB-30	30	2.44

## Colors



\* Size can be customized, Production upon request, timing and price to be agreed

## Laying instructions



- 1 Choose the WORSTRIP in the required width.
- 2 Apply the adhesive onto the area of application of the profile.
- 3 Lay and align the profile, cut to the necessary length, pressing it into the adhesive.
- 4 Lay the tiles, aligning them so that the top edge of the profile is flush with the tile.
- 5 Fill the profile/tile area of contact with adhesive to prevent the accumulation of water in any voids.